

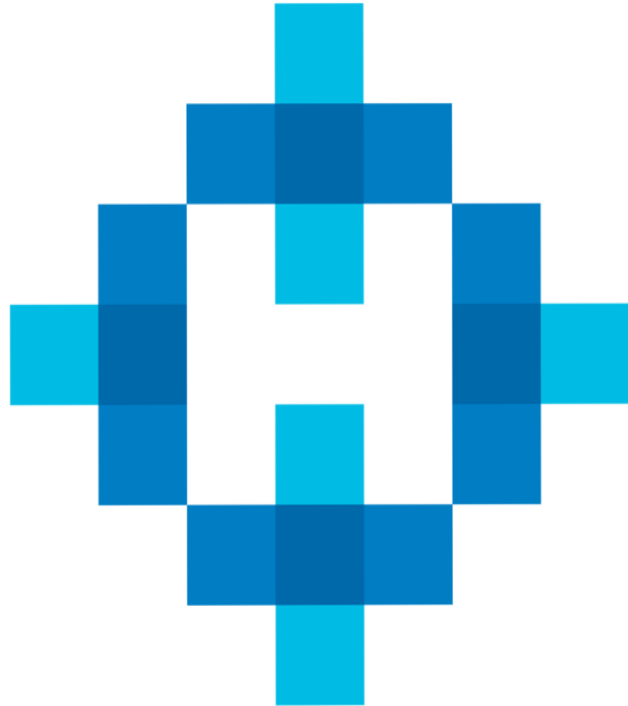


HUTCHINSON  
REGIONAL HEALTHCARE SYSTEM

*Welcome  
We're Glad You're  
Here*



**HUTCHINSON**  
REGIONAL HEALTHCARE SYSTEM



INTEGRITY  
COMPASSION  
ACCOUNTABILITY  
RESPECT  
EXCELLENCE

iCARE

# HUTCHINSON HOSPITAL HISTORY



GRACE  
HOSPITAL







ST. ELIZABETH'S MERCY HOSPITAL  
(PRE HRHS)



# "HUTCH'S HOSPITALS MERGE"

## The Hutchinson News

On Sept. 1, 1970, the officials sat elbow-to-elbow as they affixed their signatures to documents.

A photographer captured the moment, & the headline in The Hutchinson News the following day required just three words: "Hutch's Hospitals Merge"

99th Year

No. 61

32 Pages

Wednesday Morning, September 2, 1970, 1



THREE MERGER PRINCIPALS, (from L.) Bill Kline, Ray Dillon and Sister Mary Gemma, make it official.

## Hutch's Hospitals Merge

By MARY ANNE CRABB  
(Related Stories, Page 1.)

With a couple of flourish-  
es of a pen, years of study,  
conversation and negotia-  
tion ended Tuesday morn-  
ing and Hutchinson's two  
hospitals merged into a sin-  
gle unit under the Hutch-  
inson Hospital Corporation.  
Signing the separate agree-  
ments were Bill Kline, chair-  
man of the Grace Hospital  
Board, and Sister Mary Gem-  
ma, administrator and presi-  
dent of the governing board of  
St. Elizabeth's Hospital.

hospitals. A study would be in-  
stituted to coordinate personnel  
policies of the two hospitals, he  
said, but it is not intended that  
wages and benefits would be re-  
duced.

"Due to rapidly rising hospi-  
tal costs nationwide," said Dil-  
lon, "it is not anticipated that  
hospital charges will be re-  
duced, but their increase will  
be slowed by the economies re-  
sulting from the proposed  
merger."

The new community hospi-  
tal corporation will be in the  
multi-million dollar bracket.  
Assets of Grace Hospital are

estimated at \$3½ million and  
of St. Elizabeth's at \$1½ mil-  
lion.

According to a statement of  
the corporation, "as soon as  
practical after the operation of  
the two hospitals has been ef-  
fectively merged and coordinat-  
ed, the board of directors will  
begin a study to determine if it  
is feasible and practical to ex-  
pand hospital facilities through  
construction at a new site of a  
new modern hospital, or wheth-  
er it is more desirable to  
repair, expand and modernize  
one or both of the existing hos-  
pitals. The outcome of this

study will be greatly influenced  
by the availability of financial  
assistance from the federal and  
state governments and other  
sources."

Cost of expanding facilities at  
one site or of building a new  
site have been estimated to be  
about the same—in the neigh-  
borhood of \$14 million.

The initial move toward a  
merger of the hospitals came  
in July of 1969 when both  
agreed to formation of the  
Hutchinson Hospital Corpora-  
tion as a separate entity cre-  
ated to find a method of

merging the two hospital  
into one organization.

The unification move has  
been commended by the Re-  
no County Medical Society.

"We have realized for some  
time," says the society sta-  
tement, "that hospital care in the  
present age involves complex-  
ties and expensive technology  
which cannot be efficiently pro-  
vided in duplicate. The flexi-  
bility inherent in a unified hos-  
pital service will permit the  
fullest possible exercise of pro-  
gressive methods by the phy-  
sicians of Reno County in behalf  
of their patients."



# GROUNDBREAKING FOR THE NEW HOSPITAL

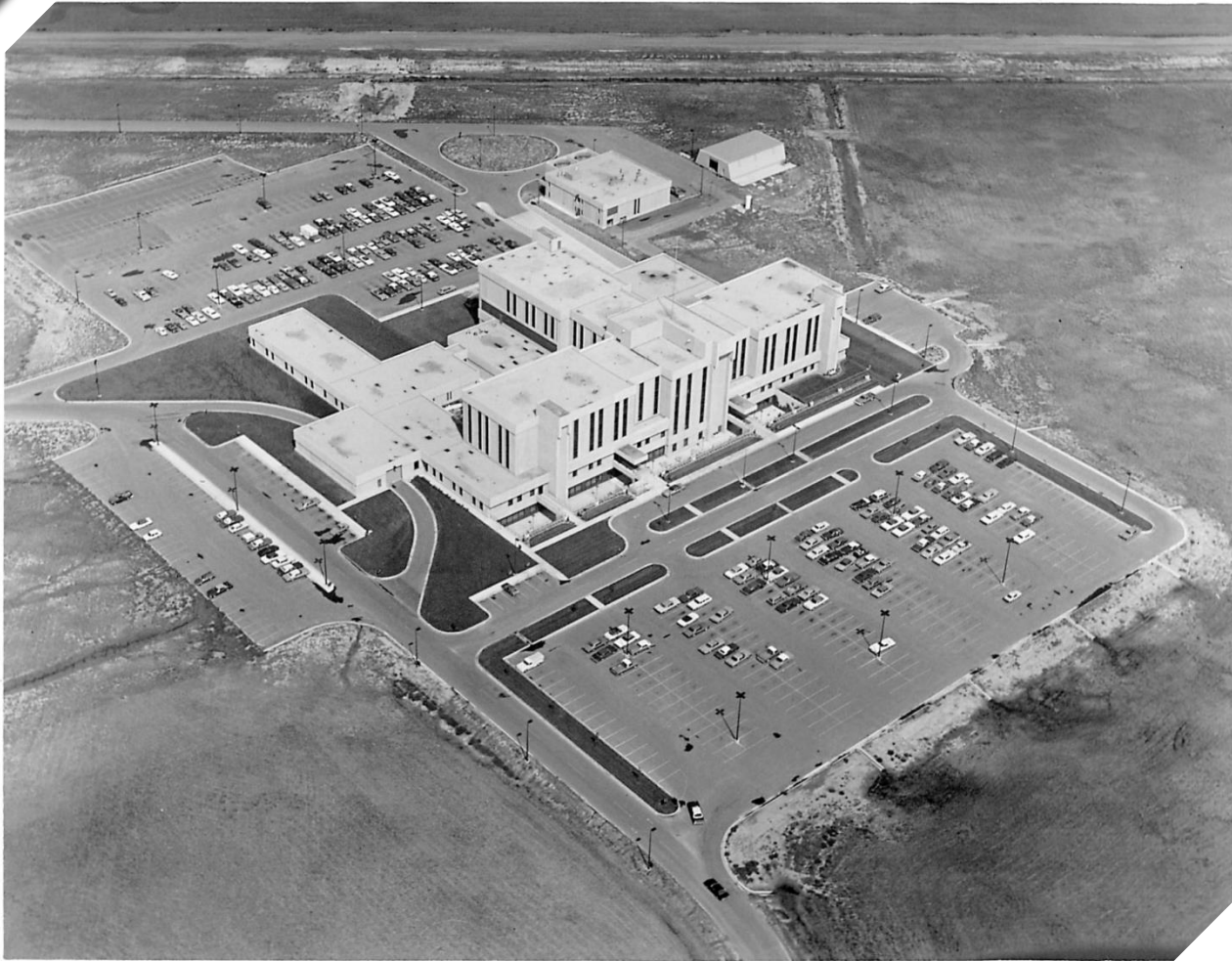
1972 to 1974











HUTCHINSON  
HOSPITAL  
OPENS IN  
**1975**



# HUTCHINSON REGIONAL HEALTH SYSTEM

## MILESTONES - 1980 - 1989

1981 - Mobile Nuclear Camera

1983 - Cardiac Monitoring: ICU

1984 - Biplane Radiology Equipment

1985 - Fluoroscopic X-Ray

1988 - Linear Accelerator

1989 - Construction Grant: Dillon Living Center

1988:

# Chalmers Cancer Treatment Center opens



# HUTCHINSON REGIONAL HEALTH SYSTEM MILESTONES 1990 - 1999

- ▶ 1990 - Fountain for Dillon Living Center
- ▶ 1993 - CT Scanner
- ▶ 1994 - Hospice Building
- ▶ 1995 - Chalmers Cancer Treatment Center Equipment
- ▶ 1999 - Chalmers Cancer Treatment Center – Linear Accelerator





1990: RAY E. DILLON LIVING CENTER OPENS



# 1990'S HUTCHINSON REGIONAL HEALTHCARE SYSTEM

'92 - Cardiology program launched & west side of hospital expanded

'93 - Dialysis unit opens

'94 - Family Birthing Center Opens

'95 - Community Health Center opens

'96 - Residential care unit for the terminally ill opens

'97 - Heart surgery begins

# HUTCHINSON REGIONAL HEALTH SYSTEM

## MILESTONES 2000 - 2009

2001 - Hospital MRI

2003 - Hospice Residence

2006 - Interventional Radiology Equipment

2008 - Chalmers Cancer Treatment Center



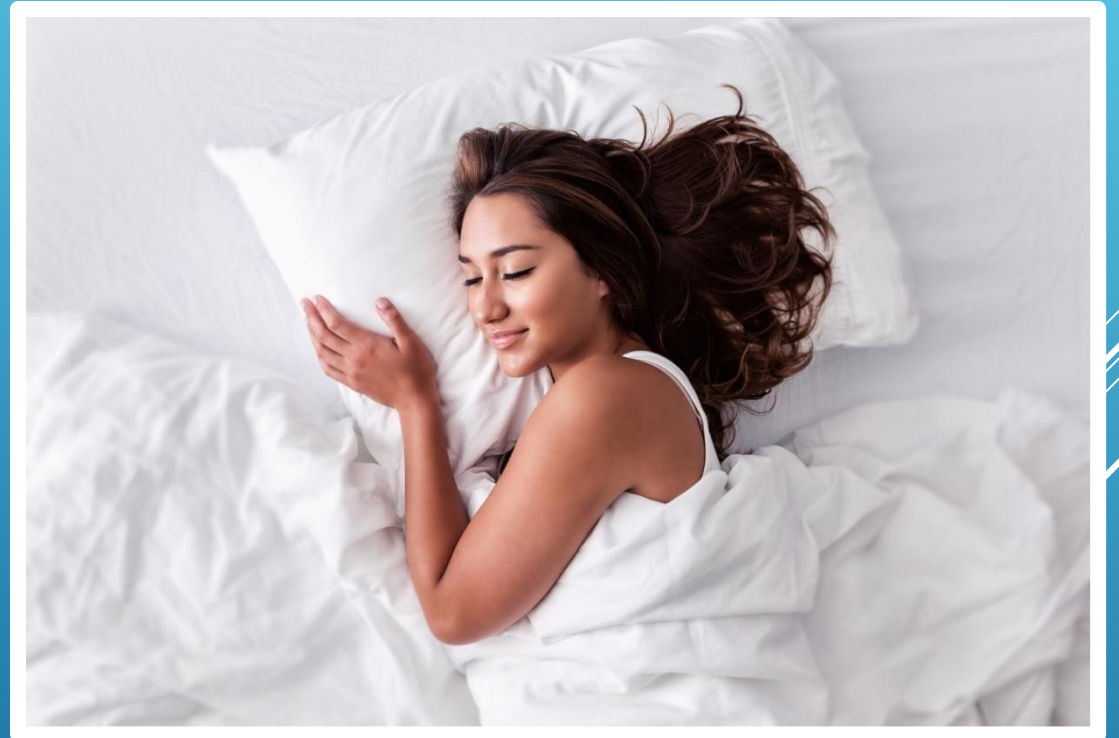
2002: HOSPICE HOUSE OPENS



2004:  
EMERGENCY  
HELICOPTER  
SERVICE BEGINS



2005:  
Sleep Diagnostic  
Center Opens





- 2006:** Trade Center purchased to house
- ▶ Horizons Mental Health Center
  - ▶ Hospice & Homecare of Reno County.



**2007:**

Six new surgical rooms are added to HRMC as part of a multi-million dollar expansion

**2009:**

Tomotherapy unit installed at Chalmers Cancer Treatment Center





**2010:**  
**First DaVinci robotic  
procedure performed  
at HRMC**

2011:

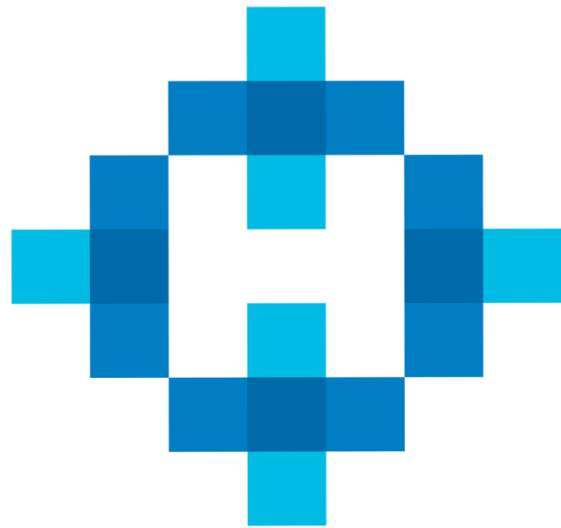
The hospital changes its name to:  
**Hutchinson Regional Medical Center**





# 2015:

## ICARE culture initiated at HRHS



INTEGRITY  
COMPASSION  
ACCOUNTABILITY  
RESPECT  
EXCELLENCE

 **ICARE**

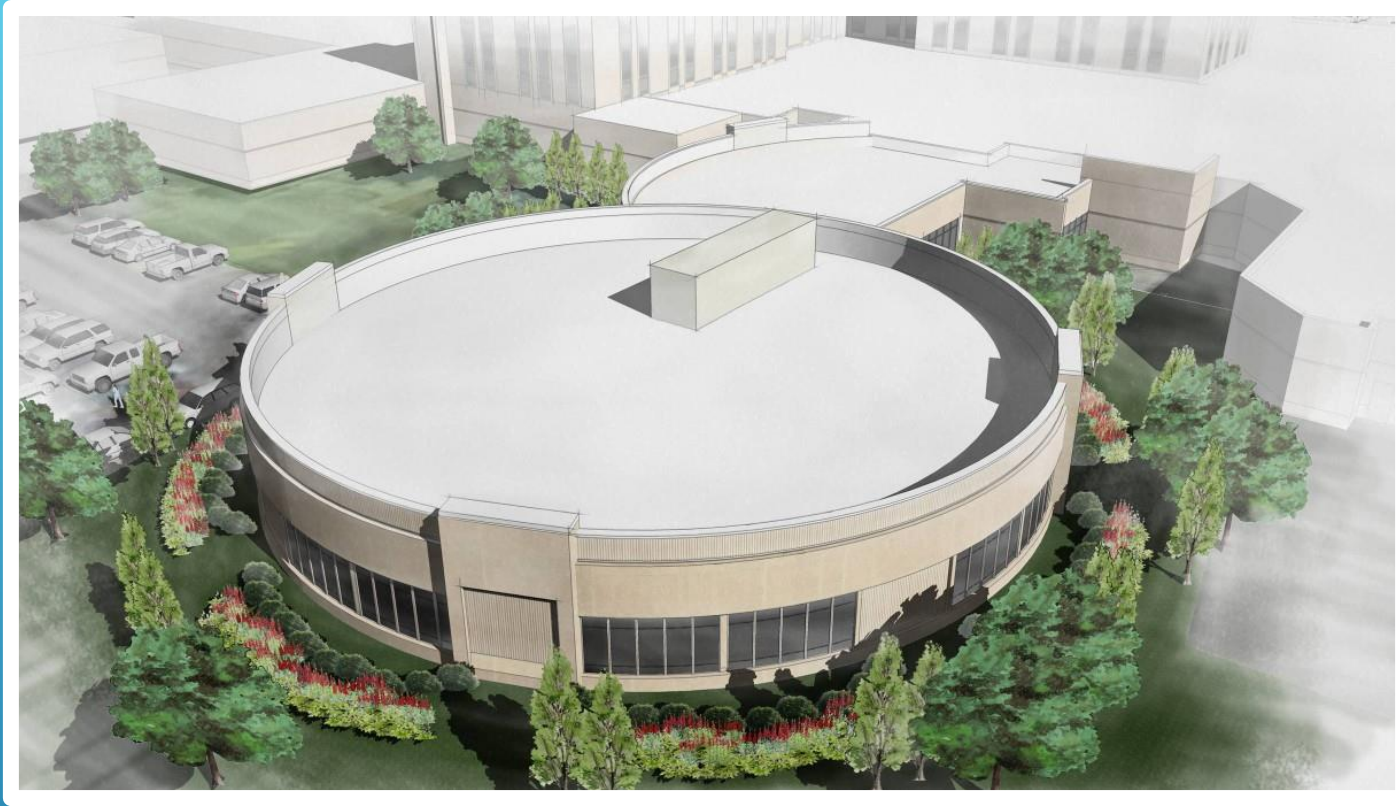


# 2015:

\$6.2 million  
expansion  
of Emergency  
Department



**2016:**



HRHS begins to upgrade the hospital's Intensive Care Unit (ICU) and the facility's emergency power system.

The project total cost is \$23 million.





## 2018:

The Hutchinson Regional Medical Foundation donates \$2.7 million to bring a new Magnetic Resonance Imaging (MRI) scanner to the hospital

HRO

*HIGHLY RELIABLE  
ORGANIZATION*

# 2018: ICU OPENS TO THE PUBLIC

- ▶ Opening months ahead of schedule, the ICU features state-of-the-art technologies, telemetry and nurse call
- ▶ A committee of employees worked together to design an ICU that would be built around patients and their care
- ▶ The Foundation donated \$4 million towards the development of the ICU





ICU Suite



ICU Aerial view



ICU Garden



MRI Suite

# AIDET

***A – Acknowledge***

***I – Introduce***

***D – Duration***

***E – Explanation***

***T= Thank You***

# 2018-2019

## TJC certification

- HRMC, Perinatal Care Certification, Hospice, Homecare and Health E-Quip, Palliative Certification

Implementation of Electronic Health Record @ HRMC, Hospice/Homecare & Horizons

2 Pulmonologists and Oncologist join HRHS July 2019

Laboratory is CAP certified

Horizons Mental Health celebrates 50<sup>th</sup> anniversary

Stryker Mako Robotic Arm

Opening of ICU



# 2018-2019

Inpatient Rehab  
Unit recognized as  
a top facility in  
nation

New MRI suite

Primary Stroke  
Center received  
*Stroke Gold Plus  
Achievement  
Award*

Reno County EMS  
winner of the  
*Lifeline EMS Gold  
Plus* award for 3<sup>rd</sup>  
straight year

Strategic energy  
management  
program

Ranked Top 10  
in Kansas for safety  
by Consumer  
Reports

Midwest  
Transplant  
Award

Leadership  
Academy

# OUR IMPACT IN THE COMMUNITY

Vouchers  
benefiting ED  
patients with  
limited resources

Hosted  
**Leadercast**

Provided \$12,000  
towards **Jeans  
Day** donations

**Stop the Bleed**

Mass casualty  
training

**Cuddle Cot**  
Fundraiser

McPherson  
**All Schools  
Day Parade**

**Night at the  
Ballpark**

**United Way**  
Work day

Kids Kamp

Lowe's &  
Guardians of the  
Children  
toy collection

# OUR IMPACT IN THE COMMUNITY

100% of **HRHS management** volunteers in the community

**Reno County EMS**  
on-site at the  
*Kansas State Fair*

**HRHS Academy**  
introduces students  
to medical careers

Partners with **United Way** of Reno County

\$70,000 spent on  
local sponsorships

Partner in the  
annual  
**Heart Walk**

Collaborated to  
provide free  
concert tickets to  
area first responders

Sponsor  
Community  
Health Fairs

Monthly  
First Course sessions  
free to the public

Educational  
programs

Monthly  
commodities  
distribution

**Meals on Wheels**  
support